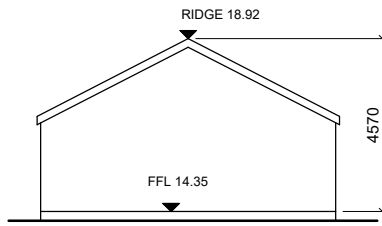
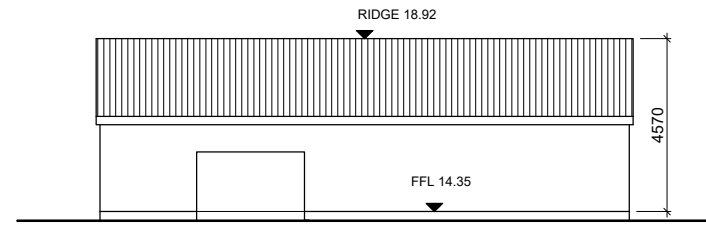


KEY PLAN

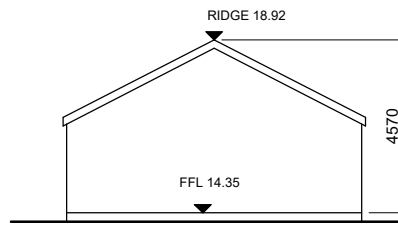
INDICATING POSITION OF STABLE
 PROPOSED FOR DEMOLITION SHOWN IN ORANGE
 SCALE 1:500
 NOTE: SEE CCK DRAWING P050 FOR LOCATION IN CONTEXT



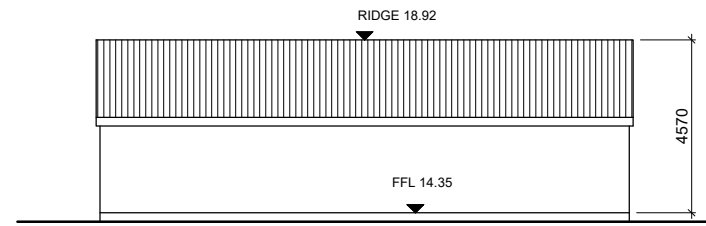
WEST FACING ELEVATION
 SCALE 1:200



NORTH FACING ELEVATION
 SCALE 1:200



EAST FACING ELEVATION
 SCALE 1:200



SOUTH FACING ELEVATION
 SCALE 1:200

- © This drawing is copyright.
- 1 Do not scale this drawing.
- 2 Errors and omissions to be immediately notified to Architect.
- 3 All dimensions to be checked on site.
- 4 To be read with relevant Engineers drawings.

revisions	date	inls
description		
Proposed Demolition		drawing no. 1902 P 054
Streamstown Shed		scale 200@A3
job		date Mar' 2021
DEVELOPMENT AT AUBURN MALAHIDE		drawn AOL
client		checked
KINWEST LIMITED		
issue		
AUBURN SHD PLANNING		
CONROY CROWE KELLY ARCHITECTS & URBAN DESIGNERS		
65 MERRION SQUARE DUBLIN 2		
phone 01 6613990 fax 01 6765715 email info@cck.ie		